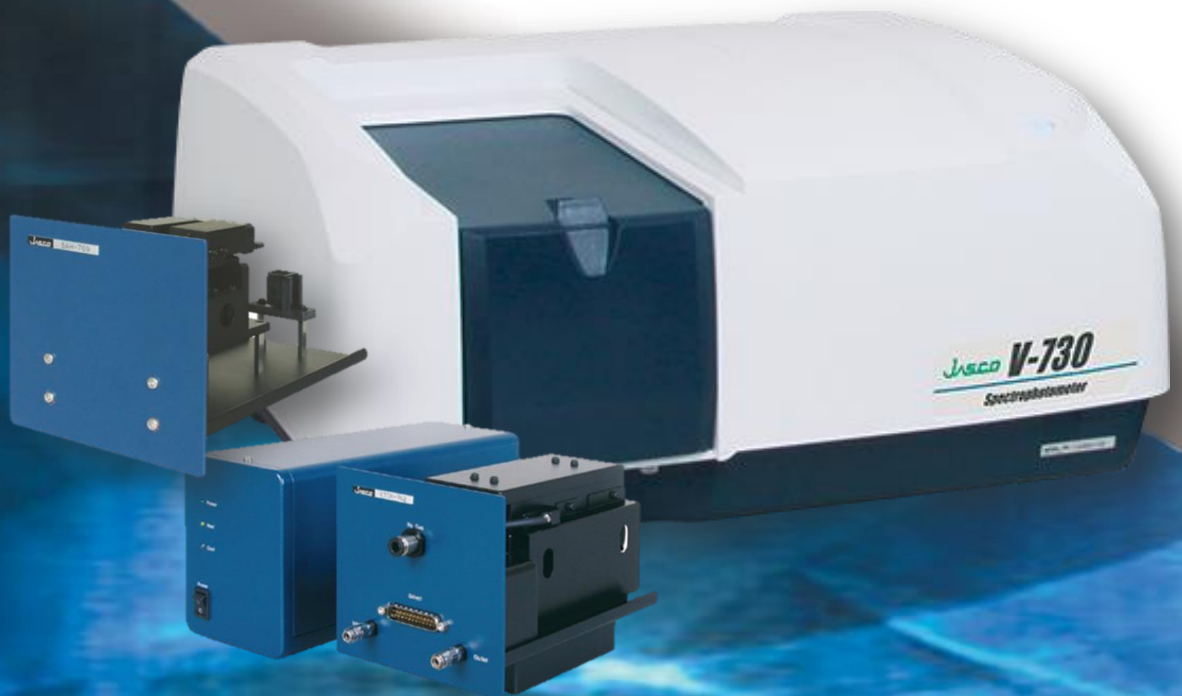


V-730-CFR

UV-Vis Double Beam Spectrophotometer



JASCO Corporation - Japan was founded in 1958 to provide the scientific community with optical spectroscopy products.

In the mid-1950's a group of researchers in the Institute of Optics of what is now Tsukuba University needed an Infrared Spectrophotometer for their research.

Since a commercially available instrument was not yet existing at the time, they undertook the challenge to develop their own.

The result was quite a success - a reliable instrument with excellent optical performance. As a second result, other research groups asked them to replicate the instrument for use within their laboratories.



Over the years the JASCO product line has grown to cover instruments used, not only in research but also for routine analysis applications in areas such as quality control, environmental analysis, and process control. The current spectroscopy product line encompasses instrumentation for the following methods:

- **UV/Visible and NIR**
- **Microscope Spectrophotometers**
- **FT-IR, microscope FT-IR and FT-Raman**
- **Dispersive RAMAN**
- **Polarimeters**
- **Spectrofluorometers**
- **Portable Raman**
- **Portable FT-IR**
- **Fully Automated Dissolution Tester**

JASCO is also the world leader in the field of **Circular Dichroism Spectropolarimeters** and **Vibrational Circular Dichroism Spectrometers**.

“serving the Science and Technology World by providing most advanced analytical instrumentation”

With the introduction of HPLC in the mid-1970's JASCO's experience in highly sensitive and accurate optical systems led to the development of a series of chromatographic detection systems. Fixed and variable wavelength UV/Visible and Fluorescence detectors were introduced featuring excellent sensitivity and reliability in compact modules. In order to offer complete HPLC systems JASCO developed a variety of novel solvent delivery systems as well as other accessories such as column ovens, autosamplers, and PC based control and analysis software.

Today JASCO offers a wide variety of **HPLC modules**, accessories and analysis software. The new **JASCO LC-4000 Liquid Chromatography** series is designed to operate at pressures approaching 15,000 psi for either gradient or isocratic separations, providing researchers with a powerful tool when using the new generation of small particle columns. LC-4000 Series includes a versatile series of components offering unique flexibility to build systems for routine and specialized applications. LC-4000 features the widest choice of optical HPLC detector: UV, diode array, fluorescence, chemiluminescence, CD, chiral and refractive index detector.

Finally JASCO's modular **Supercritical Fluid Chromatography** and **Supercritical Fluid Extraction** platforms provide a low-cost, fast, green technology with reliable and worry-free performance for a wide variety of applications.



JASCO has a strong global presence, supplying customers in **over 45 different countries**.

JASCO Europe is responsible for marketing, sales, service and support for all Jasco products throughout **Europe, Middle East and Africa**.



JASCO Europe S.r.l.

Via Cadorna, 1 - 23894 Cremella (LC)

Tel. +39-0399215811

Fax +39-0399215835

jasco@jasco-europe.com

www.jasco-europe.com

Follow us on:



Make the most of your investment with **JASCO Service and Support**

JASCO Service and Support agreement plans are designed for those laboratories pursuing superior productivity through the highest level of professional services.

The use of automated instrumentation is the right approach to meet today's laboratories productivity requirements, reducing analysis run times, enhancing sample throughput, and increasing analytical accuracy and precision. In this view, preventive maintenance is very important to maximize laboratory uptime and avoid unexpected expenses.

In addition to the analytical goal, proper installation and maintenance are required to achieve optimal performance. JASCO provides flexible service and support management solutions focused on your laboratory real objectives.

With its service network, JASCO is ready to maintain the perfect reliability of customer's instrumentation and minimize the laboratory down time.

- *Superior productivity*
- *Optimized analytical performance*
- *Lower cost of ownership*
- *Extended instrument life*

If your laboratory has specific Service and Support requirements, JASCO can help you with customized contract agreements. In addition, a full set of Installation Qualification (IQ), Operational Qualification (OQ), and Performance Qualification (PQ) tests are available to verify the system proper installation, operation and performance, respectively.

Get the most from your investment with **JASCO Training Courses**

JASCO Training Courses ensure maximum skill development for the best value of your laboratory. Our team of highly-experienced specialists can help your staff to get the most from your instrument reducing your analysis run time and improve performance.

Build your knowledge with JASCO Training Courses:

- *Instrument and Software operation*
- *troubleshooting*
- *Maintenance*
- *Calibration*
- *Applications and Methods developments*
- *Operating Techniques*



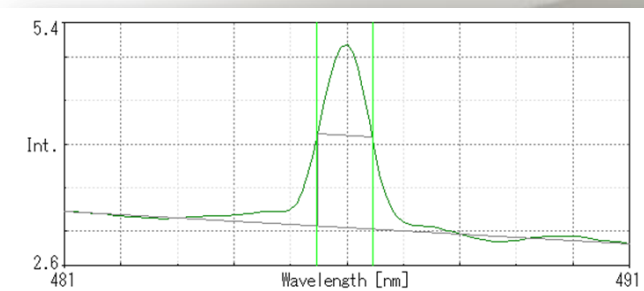
UV-Vis Spectrophotometer JASCO V-730-CFR

The V-730-CFR is a general-purpose UV-Vis spectrophotometer with a compact design to minimize bench space requirements. It has excellent spectroscopic performance suitable even for research applications as well as educational and routine QC applications.

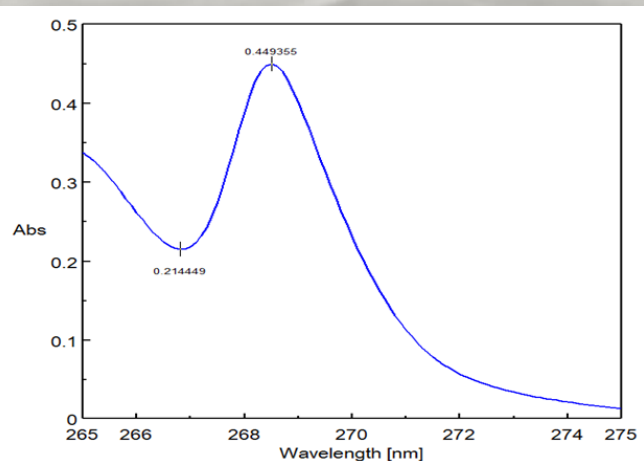
The advanced optical design features a wide wavelength range of **190 to 1,100 nm**, stray light less than 0.02% and a spectral bandwidth of 1.0 nm, enough to satisfy any pharmacopoeia requirement.

JASCO V-730-CFR KEY FEATURES

1nm Spectral Bandwidth - In the European Pharmacopoeia, the standard resolution test for a mixture of Toluene/Hexane requires that the spectral ratio at 269 nm and 266 nm must exceed 1.5; with a **1 nm SBW**, V-730-CFR passes this test with ease.



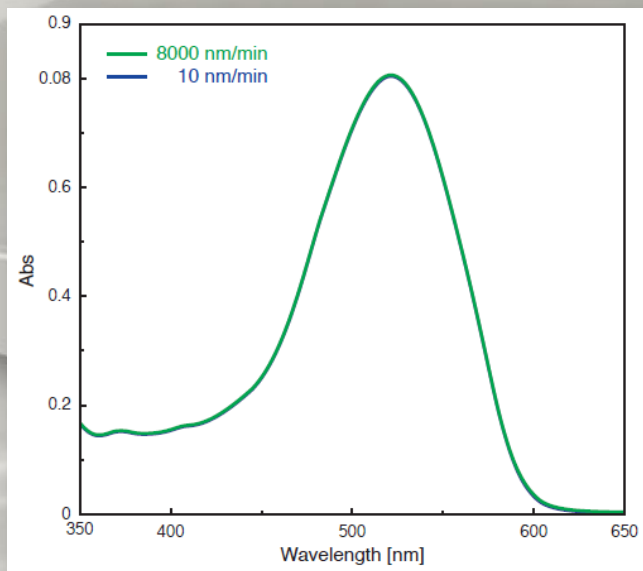
Spectral Bandwidth calculated : 0.974



Resolution test of EP -Toluene/Hexane:
Resolution=2.0954

Dynamic range - Optimal balance between light intensity, signal to noise and resolution supporting European Pharmacopoeia (EP). Faster instrument response and monochromator slew speed for enhanced Protein/DNA concentration measurements. The V-730-CFR has a wide range of special accessories and optional programs for a broad range of analyses.

High scan speed - V-730-CFR can perform spectral measurements at scanning speed up to **8,000 nm/min**. The figure below shows the comparison of spectra measured at scanning speeds of 8,000 nm/min and 10 nm/min. The two spectral shapes match very closely, and the shape does not vary even with high-speed scanning. For example measurement time for Protein/Nucleic acid quantitation program can be performed in just 8 seconds.

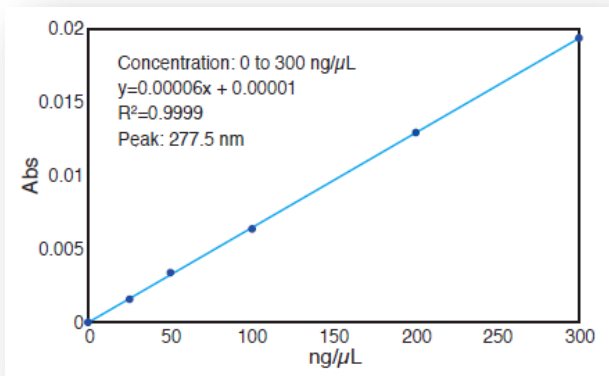


Comparison of high-speed scan and normal scan

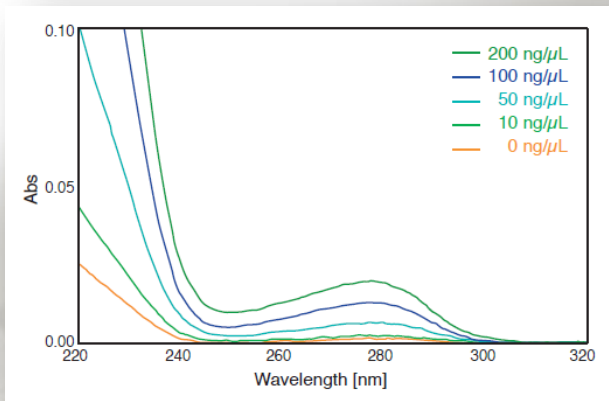
IQ accessory and IQ Start - The IQ Accessory function automatically recognizes an accessory when it is inserted into the sample compartment. When the IQ Accessory system recognizes the registered accessory, the assigned program automatically starts by using the IQ Start function.

Start Button - All models have a Start Button for immediate initiation of sample measurement. After placing a sample in the sample compartment, simply press the Start Button on the instrument to begin measurement.

Micro Cells - The standard cell holder of V-730-CFR accepts micro cells (optical path length of 10 mm) with a minimum optical path width of 2 mm, which is useful for measurement of very small amounts of sample. Figures below illustrate highly accurate measurement of small amounts of albumen solution by using the EMC-759 Ultra-micro cell holder and a 5 µL micro cell.



Calibration curve of albumen solutions



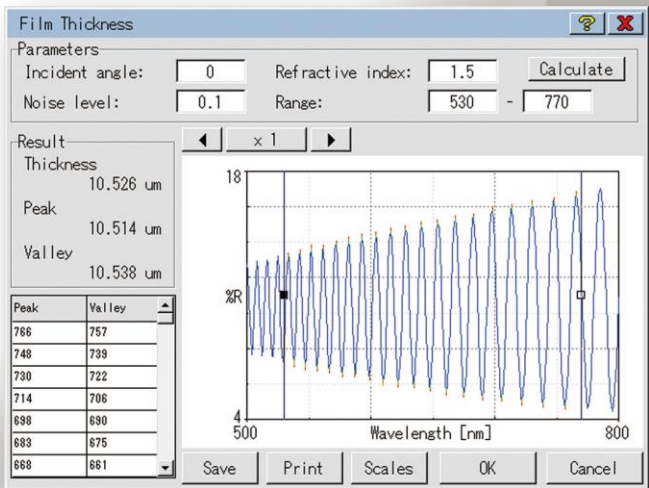
Spectra of albumen solutions

Dark Correction - A Dark Correction function is standard for all models of the V-700 Series, which provides photometrically accurate measurements of highly absorbing samples.

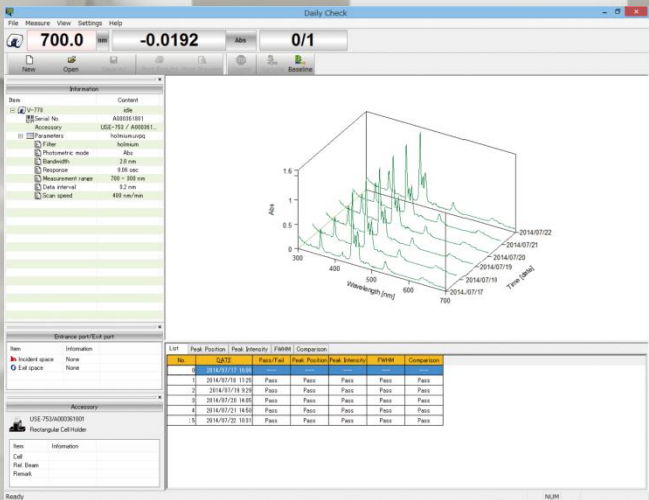
Energy and space-saving system

- Green technology, best energy-saving in its class Switch off the light source from the measurement screen when not in use.
- Save energy and lamp life.
- All models have the most compact design requiring minimal bench space.

Film thickness measurement - Film thickness measurements can be made using the SLM-907 specular reflectance accessory and integrated as standard Film Thickness measurement program. The film thickness of a food packaging film using the SLM-907 single reflection accessory is shown below.



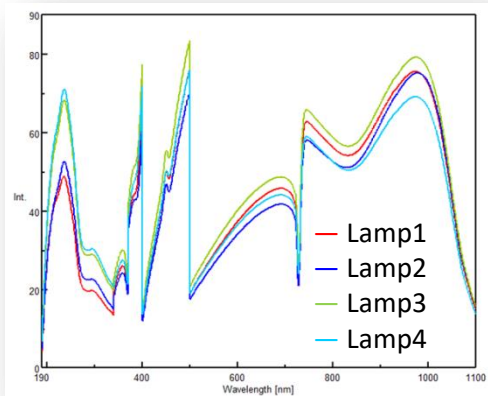
Daily check program - For users who requires a regular validation check; use a simple Holmium glass filter (or other standard) for daily measurement with automatic execution of procedures to easily record and track a comprehensive history of instrument performance.



Validation - V-730-CFR provides a standard validation program. This program supports USP, EP and JP instrument qualification requirements. The program automatically performs an analysis of the instrument results based on defined acceptance criteria. Results of the validation tests can be printed or saved electronically for further review.

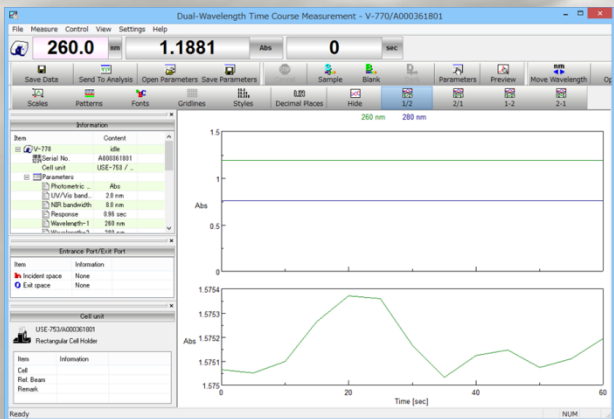
Alignment-free lamp replacement - The design of the socket deuterium lamp and socket tungsten halogen lamp facilitates light source over replacement, simplifies maintenance and reduces operation error.

In the example below, single beam spectra and validation results of 4 different lamps mounted without any alignment tools.

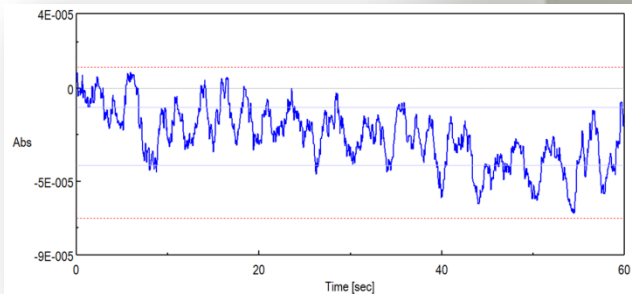


	Lamp 1	Lamp 2	Lamp 3	Lamp 4
Wavelength Accuracy	Pass	Pass	Pass	Pass
Photometric Accuracy	Pass	Pass	Pass	Pass
Noise Level	Pass	Pass	Pass	Pass
Baseline Flatness	Pass	Pass	Pass	Pass

Dual wavelength time course measurement - kinetics measurement can be performed by simultaneous dual wavelength, and the difference between dual photometric value and the ratio of dual photometric value can be plotted.

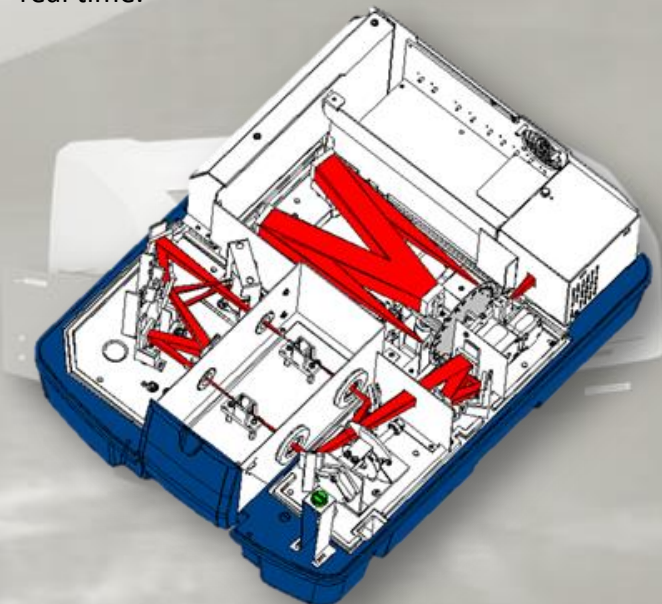


Lowest RMS noise – Using a new pre-amplifier, JASCO V-730-CFR achieves the lowest RMS noise offering an outstanding sensitivity compared to similar UV-Vis spectrophotometers on the market.



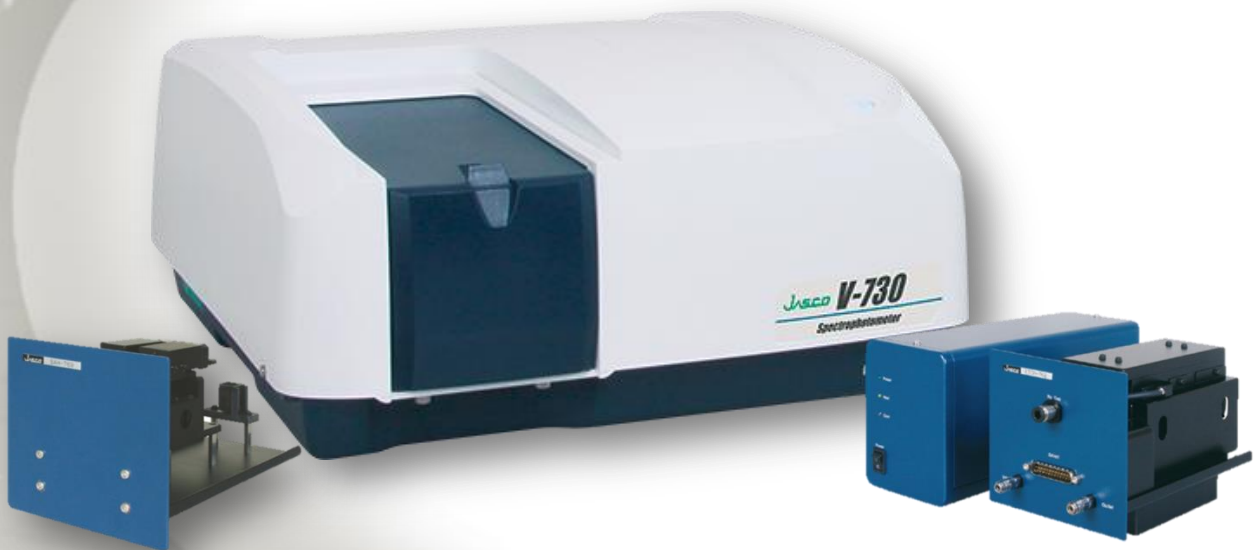
RMS Noise 0.00004 Abs

True Double-Beam spectrophotometer - All JASCO V-700 spectrophotometers are true double-beam systems, provide the best possible stability and allow reference to be measured and corrected in real time.



Extensive Range of Accessories - The V-700 Series can be integrated with more than 70 accessories and over 30 optional programs to offer flexible configurations for a wide variety of analytical requirements. Experimental capabilities range from simple educational applications and routine daily use, to specific applications for advanced biochemical and semiconductor research.

The range of accessories include various types of cell holders for liquid samples and options for a wide variety of solid samples.



JASCO V-730-CFR Unique Features

- **Standard working range (190 to 1,100 nm)** and **spectral bandwidth (1nm)** enough to satisfy any Pharmacopoeia requirements.
- **Outstanding RMS noise (0.00004 Abs)** and **Stray Light (0.02%)** provide capabilities from education and routine analysis to high-end research applications.
- **High Scan Speed (8,000 nm/min)** assures a measurement time of Protein/Nucleic acid in 8 seconds keeping spectral shapes similar to what acquires at a slow scanning speed.
- **True Double-Beam** spectrophotometer provides the best possible stability and allows reference to be measured and correct on real time.
- **IQ Accessory function** for automatic recognition of any accessory inserted into the sample compartment.
- **Validation** and **Daily Check** programs help operator to keep the instrument always in perfect conditions assuring maximum accuracy of obtained results.
- The V-700 Series can be integrated with more than **70 accessories** and over **30 optional programs** to offer flexible configurations for a wide variety of analytical requirements.
- Cross-platform software package **Spectra Manager CFR** provides features to support laboratories for compliance with **21 CFR Part 11**.

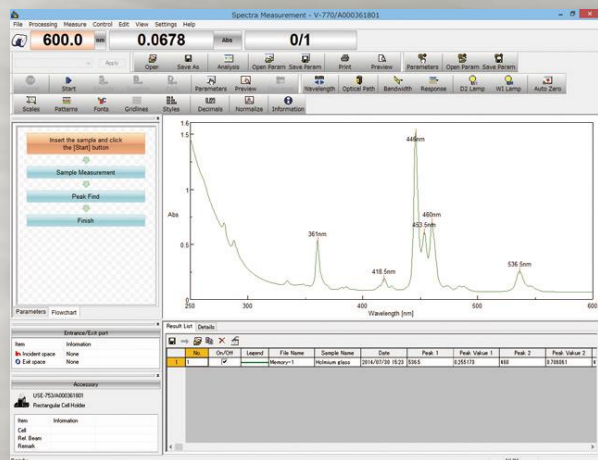
Software JASCO SPECTRA MANAGER II

The SPECTRA MANAGER II program is a comprehensive package for capturing and processing data, eliminating the need to learn multiple software packages and offering the user a shallower learning curve. Several types of measurement data files can be viewed in a single window, and processed using a full range of data manipulation functions.

The basic package includes:

QUICK START MEASUREMENT PROGRAM - The Quick Start Measurement Program can automatically perform a series of operations as specified by a user, from measuring samples and processing data to saving and printing results, with a single click of the start button. The procedure is stored in memory for repeated use. The data processing functions include comparison of an obtained spectrum with spectra specified by a user.

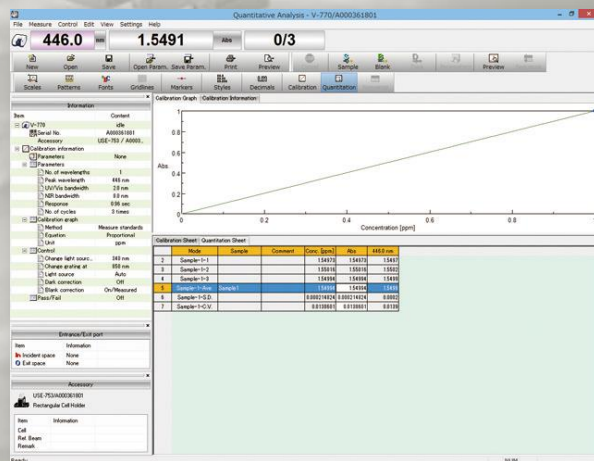
SPECTRA MEASUREMENT PROGRAM - The Spectra Measurement program measures photometric values of a sample in the selected wavelength range. Abs, %T or %R are available for the vertical axis while nm, cm⁻¹, μm, and eV are available for the horizontal axis.



CANVAS PROGRAM - JASCO Canvas Program allows the user to prepare publication quality layouts of spectra, measurement parameters, text, images (BMP and WMF formats) to meet the user's own report requirements. The program also includes a set of drawing tools for professional documentation. Newly created documents can be stored as templates for routine data presentation.

VALIDATION PROGRAM – The Validation program offers assistance for verifying instrument performance to meet regulatory requirements set by GxP. The test methods are compliant with USP, EP and JP procedures. The program includes validation tests for wavelength accuracy, wavelength repeatability, photometric accuracy, photometric repeatability, resolution, resolution power, stray light, noise level, baseline stability and baseline flatness. Optional standards and tools are required for some validation tests.

QUANTITATIVE ANALYSIS PROGRAM - The quantitative measurement package consists of two programs; a calibration curve creation program and a quantitative measurement program. The program provides three types of baseline correction methods and eight types of calibration curves. A function for providing a pass/fail judgement for the obtained values is included.



Software JASCO SPECTRA MANAGER II

FIXED WAVELENGTH PROGRAM - The Fixed Wavelength measurement program measures the photometric values of up to eight multiple wavelengths. A 'cycle number' and 'wait time' are selectable, and the mean, standard deviation and C.V. value for each wavelength are displayed after completion of each cycle of sample measurements.

SPECTRUM PREVIEW FUNCTION - The spectrum preview function allows a user to monitor changes to a spectrum by varying parameters in real-time. A spectrum can be rapidly obtained using the maximum scanning speed available. This function allows verification of the optimum set of instrument parameters and to check sample conditions before actual measurements.

TIME COURSE PROGRAM - The Time Course measurement program measures the changes of a sample's photometric value over time at a fixed wavelength and with a defined interval. For the time course measurement, the V-730 can obtain data at a minimum interval of 0.01 sec. Parallel time course measurements while controlling the cell positions of a cell changer are also possible.

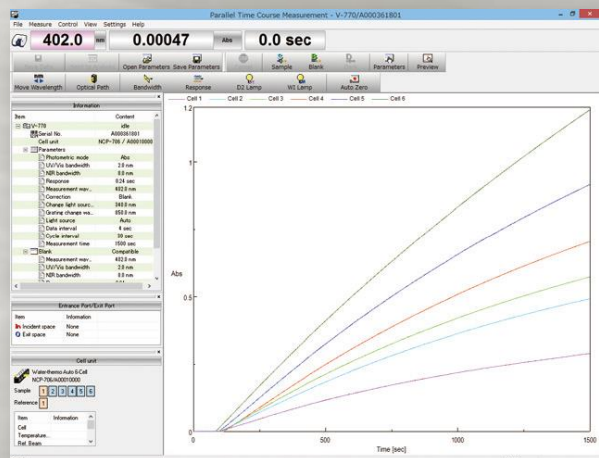
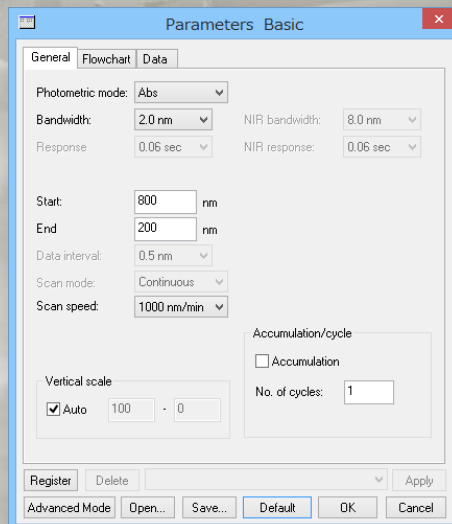
SPECTRA ANALYSIS PROGRAM - The spectra analysis program includes all typical data analysis and data manipulation functions.

Furthermore, the film thickness measurement, color analysis, and the enzyme activity calculation programs are provided as standard.

Data manipulation functions

- *Spectral manipulations (zoom in, zoom out, rescale)*
- *Overlay*
- *Arithmetic operations*
- *Spectral Subtraction*
- *Derivatives*
- *Peak detection and processing - Find, Height, Area, FWHH*
- *Smoothing*
- *FFT Filter*
- *Deconvolution*
- *Baseline correction*
- *Unit conversion*

AUTOMATIC SETUP - The response time is automatically determined depending on the selected bandwidth and scan speed so that the spectrum profile does not become broad. The data interval is also automatically determined depending on the selected bandwidth.

Software JASCO SPECTRA MANAGER II - CFR

Spectra Manager CFR provides features to support laboratories for compliance with **21 CFR Part 11**. A choice of complete pull-down task menus, user-friendly icons, and easily accessible pop-up menus enables new users to manage security information, control user access, and record audit trails.

The package includes:

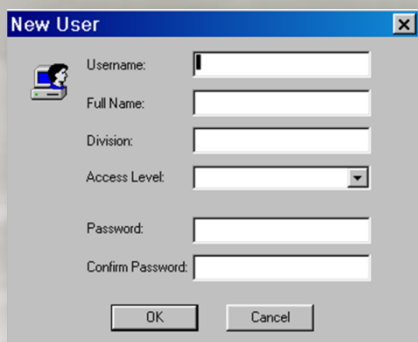
- Access control for secure systems by user ID and password
- Audit trail function with time-stamp for records tracking
- Three levels of electronic signatures for record integrity

Easy-to-use

Startup window lists available resources, such as instruments, measurement and application programs.

User registration

All users who use Spectra Manager CFR must be registered. When registered, the user must be assigned specific access levels for administrative rights and access to control and analysis programs.



New User

Username:

Full Name:

Division:

Access Level:

Password:

Confirm Password:

OK Cancel

System policy

Password expiration, the minimum number of characters and timeout for password entry can be set by authorized managers.

Access rights control

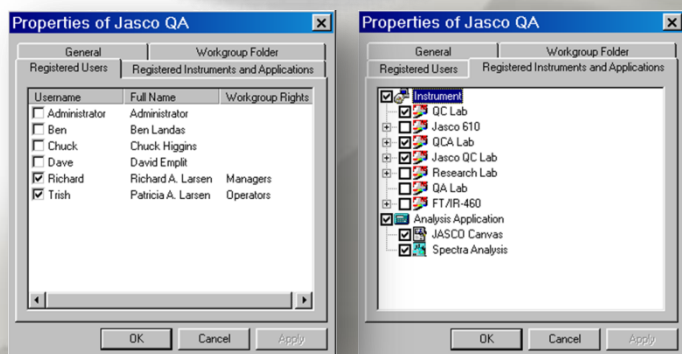
User access to the Spectra Manager CFR requires a Username and Password.

Security management

All of the security management functions of Spectra Manager CFR are accessed through the Administrative Tools interface.

Workgroup registration

Users who perform measurements and analyses must be registered in a workgroup. Within a workgroup, users are granted access as either a “Manager”, “Analyst”, or “Operator”, with authorities to modify instrument and analysis settings. Individual users are only able to execute procedures that are allowed by their assigned access level.



Properties of Jasco QA

General Registered Users

Username	Full Name	Workgroup Rights
<input checked="" type="checkbox"/> Administrator	Administrator	
<input type="checkbox"/> Ben	Ben Landas	
<input type="checkbox"/> Chuck	Chuck Higgins	
<input type="checkbox"/> Dave	David Empli	
<input checked="" type="checkbox"/> Richard	Richard A. Larsen	Managers
<input checked="" type="checkbox"/> Trish	Patricia A. Larsen	Operators

OK Cancel Apply

Properties of Jasco QA

General Registered Users

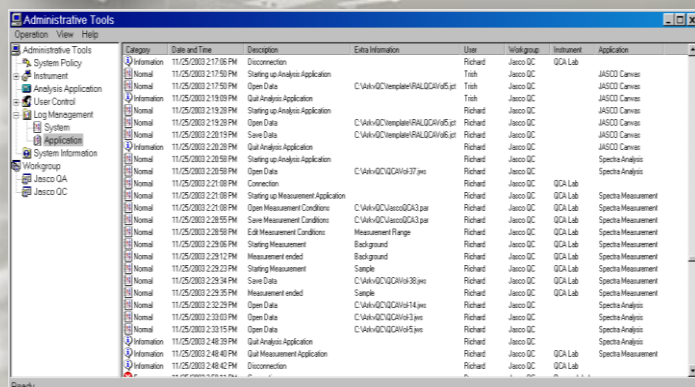
Workgroup Folder Registered Instruments and Applications

- ☒ Instrument
 - ☒ QC Lab
 - ☒ Jasco 610
 - ☒ Jasco 610
 - ☒ Jasco QC Lab
 - ☒ Research Lab
 - ☒ QA Lab
 - ☒ FT/IR-460
- ☒ Analysis Application
 - ☒ JASCO Canvas
 - ☒ Spectra Analysis

OK Cancel Apply

Audit trails

The system and application history are automatically recorded. Audit trails are assigned to every data file, recording data manipulations on the spectral data. Audit trails are also applied to instrument parameters, Canvas templates or documents and analysis methods.



Administrative Tools

Operation View Help

Category	Date and Time	Description	Extra Information	User	Workgroup	Instrument	Application
Administrative Tools	11/05/2003 2:17:05 PM	Disconnection		Richard	Jasco QC	QCA Lab	
System Policy	11/05/2003 2:17:50 PM	Starting up Analysis Application		Trish	Jasco QC	JASCO Canvas	
Instrument	11/05/2003 2:17:50 PM	Open Data	C:\VAH\QC\template\RALDGH\h5.p	Trish	Jasco QC	JASCO Canvas	
Analysis Application	11/05/2003 2:19:09 PM	Starting up Analysis Application		Richard	Jasco QC	JASCO Canvas	
User Control	11/05/2003 2:19:29 PM	Open Data	C:\VAH\QC\template\RALDGH\h5.p	Richard	Jasco QC	JASCO Canvas	
Log Management	11/05/2003 2:20:19 PM	Save Data	C:\VAH\QC\template\RALDGH\h5.p	Richard	Jasco QC	JASCO Canvas	
System	11/05/2003 2:20:59 PM	Starting up Analysis Application		Richard	Jasco QC	Spectra Analysis	
System Information	11/05/2003 2:20:59 PM	Open Data	C:\VAH\QC\template\RALDGH\h5.p	Richard	Jasco QC	Spectra Analysis	
Workgroup	11/05/2003 2:21:09 PM	Connection		Richard	Jasco QC	QCA Lab	
Jasco QA	11/05/2003 2:21:09 PM	Starting up Measurement Application		Richard	Jasco QC	QCA Lab	
Jasco QC	11/05/2003 2:21:09 PM	Open Measurement Conditions	C:\VAH\QC\Jasco\QCA3.p	Richard	Jasco QC	QCA Lab	
	11/05/2003 2:28:55 PM	Save Measurement Conditions		Richard	Jasco QC	QCA Lab	
	11/05/2003 2:28:59 PM	Edit Measurement Conditions		Richard	Jasco QC	QCA Lab	
	11/05/2003 2:28:59 PM	Starting Measurement		Richard	Jasco QC	QCA Lab	
	11/05/2003 2:28:12 PM	Measurement ended		Richard	Jasco QC	QCA Lab	
	11/05/2003 2:28:23 PM	Starting Measurement		Richard	Jasco QC	QCA Lab	
	11/05/2003 2:28:34 PM	Save Data	C:\VAH\QC\QCA\h5.p	Richard	Jasco QC	QCA Lab	
	11/05/2003 2:28:35 PM	Measurement ended		Richard	Jasco QC	QCA Lab	
	11/05/2003 2:28:39 PM	Open Data	C:\VAH\QC\QCA\h5.p	Richard	Jasco QC	QCA Lab	
	11/05/2003 2:30:03 PM	Open Data	C:\VAH\QC\QCA\h5.p	Richard	Jasco QC	QCA Lab	
	11/05/2003 2:30:15 PM	Open Data	C:\VAH\QC\QCA\h5.p	Richard	Jasco QC	QCA Lab	
Information	11/05/2003 2:40:39 PM	Quit Analysis Application		Richard	Jasco QC	QCA Lab	
Information	11/05/2003 2:40:40 PM	Quit Measurement Application		Richard	Jasco QC	QCA Lab	
Information	11/05/2003 2:40:42 PM	Disconnection		Richard	Jasco QC	QCA Lab	

Ready

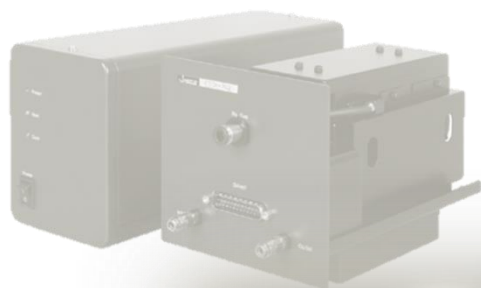
Electronic signatures

Three levels of electronic signatures, “Creation”, “Review” and “Approval” are available. Electronic signatures are applied to spectral data files, Canvas templates or documents, instrument parameters and analysis methods.

Optical System	<ul style="list-style-type: none"> • Rowland off-circle arrangement • Single Monochromator • True Double-Beam (Sample & Reference)
Light Source	Deuterium & Halogen lamps with automatic switching
Detector	Silicon photodiode
Wavelength Range	190 – 1,100 nm
Wavelength Accuracy	± 0.2 at 656.1 nm
Wavelength Repeatability	± 0.1 nm
Scanning Speed	10 to 8,000 nm/min
Slew Speed	24,000 nm/min
Spectral bandwidth	1 nm (Fixed)
Photometric Range (guaranteed on the whole spectral range)	-3 + 3 Abs
Maximum Photometric Range	-3.5 + 3.5 Abs (KMnO ₄ aqueous solution)
Photometric Accuracy	±0.0015 Abs (0 to 0.5 Abs) ±0.0025 Abs (0.5 to 1 Abs) ±0.3 %T Tested with NIST SRM 930
Stray Light	1 % (198 nm KCl 12 g/L) 0.02 % (220 nm NaI 10 g/L) 0.02 % (340 nm NaNO ₂ 50 g/L) 0.02 % (370 nm NaNO ₂ 50 g/L)
Baseline stability	±0.0004 Abs/hour
Baseline flatness	±0.0005 Abs
RMS noise	0.00004 Abs (0 Abs, 500 nm, 60 sec)
Communication	USB
Automatic Accessories Recognition	YES
Software	Spectra Manager II including the following programs: <ul style="list-style-type: none"> • Spectra Measurement • Quantitative analysis • Fixed Wavelength • Dual Wavelength Time Course Measurement • Quick Start Measurement • Canvas • Validation & Daily Check • Spectrum Preview • Film Thickness • Color • Enzyme Activity Calculation
Dimensions and weight	486(W)x441(D)x216(H) mm - 15 kg
Power requirements	120VA

Software & Sampling Accessories

V-730-CFR UV-Vis Spectrophotometer



JASCO

Spectra Manager CFR



Sampling Accessories

V-700 Series can be integrated with a complement of more than 70 accessories to offer flexible configurations for a wide variety of analytical requirements.

Experimental capabilities range from simple educational applications and routine daily use, to specific applications for advanced biochemical and semiconductor research.

The range of accessories include various types of cell holders for liquid samples and options for a wide variety of solid samples.

LSE-701 - Long path cell holder



Specifications

Sample Cell	Rectangular cell pathlength 10, 20, 50 or 100 mm
Reference Cell	Rectangular cell pathlength 10, 20, 50 or 100 mm
Capacity	1 sample and 1 reference cell
Temperature	Ambient

FSE-702 - 4-position manual long path cell changer



Specifications

Sample Cell	Rectangular cell pathlength 10, 20, 50 or 100 mm
Reference Cell	Rectangular cell pathlength 10, 20, 50 or 100 mm
Capacity	4 sample and 1 reference cell
Temperature	Ambient

SSE-704 - 6-position manual cell changer



Specifications

Sample Cell	Rectangular cell pathlength 10 mm
Reference Cell	Rectangular cell pathlength 10 mm
Capacity	6 sample and 1 reference cell
Temperature	Ambient

NCP-705 - 6-position automatic cell changer



Specifications

Sample Cell	Rectangular cell pathlength 10 mm
Reference Cell	Rectangular cell pathlength 10 mm
Capacity	6 sample and 1 reference cell
Temperature	Ambient
Cell Switching	Software Controlled
Suggested Software	<ul style="list-style-type: none"> VWIS-957 - Interval scan measurement program VWIS-958 - Temperature interval scan measurement program

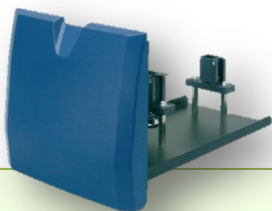
CYH-708 - Cylindrical cell holder



Specifications

Sample Cell	Cylindrical cell pathlength 10, 20, 50 or 100 mm
Reference Cell	Cylindrical cell pathlength 10, 20, 50 or 100 mm
Capacity	1 sample and 1 reference cell
Temperature	Ambient

UCB-710 – Bio rectangular cell holder



Specifications

Cell holder for V-730-CFR BIO package. A cell height adjustment function provides the ability to use a 100 μ L micro cell. A mask for a 100 μ L micro cell is standard, 50 μ L can be supplied as option.

Sample Cell	Rectangular cell pathlength 10 mm
Reference Cell	Rectangular cell pathlength 10 mm
Capacity	1 sample and 1 reference cell
Temperature	Ambient
Minimum Cell Volume	50 μ L

EMC-709 – Micro cell holder



Specifications

The EMC-709 is a cell holder for a 50 μ L micro cell. A 5 μ L micro cell can be used with an optional spacer.

Sample Cell	Rectangular cell pathlength 10 mm
Reference Cell	Rectangular cell pathlength 10 mm
Capacity	1 sample and 1 reference cell
Temperature	Ambient
Minimum Cell Volume	5 μ L

EMC-759 – Ultra-micro cell holder



Specifications

The EMC-759 is a cell holder for a 5 μ L micro cell

Sample Cell	Rectangular cell pathlength 10 mm
Reference Cell	Rectangular cell pathlength 10 mm
Capacity	1 sample and 1 reference cell
Temperature	Ambient
Minimum Cell Volume	5 μ L



50 μ L micro cell



5 μ L micro cell and spacer

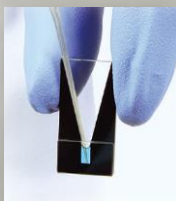
TCH-703 – 8-position Micro turret cell holder



Specifications

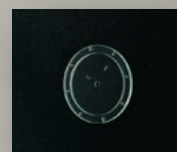
Cell holder for an optional 8-position turret micro cell, containing eight cells with a volume of approximately 4 μ L arranged in a circle.

Sample Cell	pathlength 1 mm
Capacity	8 sample cells
Temperature	Ambient
Cell Volume	4 μ L



5 μ L micro cell

8-position micro turret cell
P/N: 6916-4822A



The following cell holder accessories can be used with water circulators for maintaining samples at a uniform temperature. The circulators available separately.

STR-773

Water thermostatted cell holder with stirrer



Specifications

Sample Cell	Rectangular cell 10 x 10, 4 x 10, 2 x 10 mm
Reference Cell	Rectangular cell 10 x 10, 4 x 10, 2 x 10 mm
Capacity	1 sample and 1 reference cell
Temperature Control	Thermostatted water circulation for sample and reference
Operating Temperature	10 to 90 degC
Stirrer	Integrated variable speed magnetic stirrer - 2 mm path width micro cell cannot be used with the stirrer

HMC-711

Water thermostatted micro cell holder



Specifications

Minimum sample volume is 50 µL by using a rectangular cell, 5 mm path length and 2 mm path width.	
Sample Cell	Rectangular cell 10 x 10 or 5, 2 or 4 x 10, 2 x 5 mm
Reference Cell	Rectangular cell 10 x 10 or 5, 2 or 4 x 10, 2 x 5 mm
Capacity	1 sample and 1 reference cell
Temperature Control	Thermostatted water circulation for sample and reference
Operating Temperature	10 to 90 degC
Cell masks (standard)	<ul style="list-style-type: none"> Mask for 100 µL cell (2 pcs.) for micro cell, 2 x 10 mm Mask for 200 µL cell (2 pcs.) for micro cell, 4 x 10 mm

NCP-706

Water thermostatted 6-position automatic cell changer



Specifications

Sample Cell	Rectangular cell 10 x 10 or 5, 2 or 4 x 10, 2 x 5 mm
Reference Cell	Rectangular cell 10 x 10 or 5, 2 or 4 x 10, 2 x 5 mm
Capacity	6 sample and 1 reference cell
Temperature Control	Thermostatted water circulation for sample and reference
Operating Temperature	10 to 90 degC
Cell Switching	Software Controlled

MHT-745

Manual 4-position water thermostatted turret cell holder



Specifications

Sample Cell	Rectangular cell 10 x 10, 4 x 10 mm
Reference Cell	Rectangular cell 10 x 10, 4 x 10 mm
Capacity	4 sample and 1 reference cell
Temperature Control	Thermostatted water circulation for sample and reference
Operating Temperature	10 to 90 degC
Cell Switching	Manual

EHCS-760

**Peltier thermostatted single cell holder
(Air cooled)**

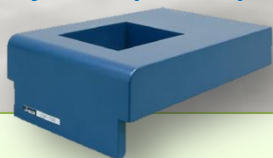


Specifications

Sample Cell	Rectangular cell 10 x 10, 4 x 10, 2 x 10 mm
Reference Cell	Rectangular cell 10 x 10, 4 x 10, 2 x 10 mm
Capacity	1 sample and 1 reference cell
Temperature Control	Sample only - Heating/cooling system using air cooled Peltier effect
Operating Temperature	10 to 60 degC (at 25 degC)
Temperature control accuracy	±0.1 degC (cell holder sensor)
Temperature Accuracy	With cell holder sensor ±0.5 degC (20 to 40 degC) ±1 degC (other temp. range) With optional temperature sensor ±0.2 degC
Stirrer	Integrated variable speed magnetic stirrer - 2 mm path width micro cell cannot be used with the stirrer
Suggested Software	<ul style="list-style-type: none"> VWIS-958 - Temperature interval scan measurement program VWTP-959 - Temperature Gradient measurement and DNA melting analysis program

CSP-909

Lid for sample compartment with syringe port



Specifications

When monitoring a substrate-enzyme reaction, this accessory allows addition of an enzyme solution without opening the sample chamber lid. Can only be used with a 10 x 10 mm rectangular cell. Required needle length for the syringe is 50 mm

Compatible Cell Holder	STR-733 EHCS-760 - ETCS-761 - ETCR-762
Syringe	P/N 0507-0220 – Micro syringe 10µL P/N 0507-0223 – Micro syringe 100µL

ETCS-761 & ETCR-762

**Peltier thermostatted single cell holder
(Water cooled)**



Sample Cell	Rectangular cell 10 x 10, 4 x 10, 2 x 10 mm
Reference Cell	Rectangular cell 10 x 10, 4 x 10, 2 x 10 mm
Capacity	1 sample and 1 reference cell
Temperature Control ETCS-761	Sample only Heating/cooling system using Water cooled Peltier effect
Temperature Control ETCR-762	Sample & Reference Heating/cooling system using Water cooled Peltier effect
Operating Temperature	0 to 100 degC for cooling water temperature at 25 degC
Temperature control accuracy	±0.1 degC (cell holder sensor)
Temperature Accuracy	With cell holder sensor ±0.5 degC (20 to 40 degC) ±1 degC (other temp. range) With optional temperature sensor ±0.2 degC
Stirrer	Integrated variable speed magnetic stirrer - 2 mm path width micro cell cannot be used with the stirrer
Suggested Software	<ul style="list-style-type: none"> VWIS-958 - Temperature interval scan measurement program VWTP-959 - Temperature Gradient measurement and DNA melting analysis program

Options

Cell Mask kit - includes sample masks and a cell-height adjustment stand to raise the cell height. Using the cell-height adjustment stand, a 2 mm path width micro cell can be used to measure sample with a minimum 100 µL volume.

OPS-515 - In-cell sensor with holder (factory option) - This is an optional sensor which can be used to monitor the temperature inside of the sample cell.

Cell Spacers - Spacers for cells with an optical path length of 1, 2 and 5 mm are available.

Capillary adapter - The capillary adapter is used for a capillary cell (minimum sample volume of 3 µL). The optional sensor (OPS-515) in the cell adapter is required for temperature monitoring.

PSC-763

**Automatic 6-position Peltier cell changer
(Air cooled)**



Specifications

Sample Cell	Rectangular cell 10 x 10, 4 x 10, 2 x 10 mm
Reference Cell	Rectangular cell 10 x 10, 4 x 10, 2 x 10 mm
Capacity	6 sample and 1 reference cell
Temperature Control	Sample only - Heating/cooling system utilizing air cooled Peltier effect
Operating Temperature	10 to 70 degC (at 20 degC)
Temperature control accuracy	±0.1 degC (cell holder sensor)
Temperature Accuracy	With cell holder sensor ±0.5 degC (20 to 40 degC) ±1 degC (other temp. range) With optional temperature sensor ±0.2 degC
Stirrer	Integrated variable speed magnetic stirrer - 2 mm path width micro cell cannot be used with the stirrer
Suggested Software	<ul style="list-style-type: none"> VWIS-958 - Temperature interval scan measurement program VWTP-959 - Temperature Gradient measurement and DNA melting analysis program

Options

OPS-513 - In-cell sensor with holder (factory option) - This is an optional sensor which can be used to monitor the temperature inside of the sample cell.

PAC-743 & PAC-743R

**Automatic 6/8-position Peltier cell changer
(Water cooled)**



Specifications

Sample Cell	Rectangular cell 10 x 10, 4 x 10, 2 x 10 mm
Reference Cell	Rectangular cell 10 x 10, 4 x 10, 2 x 10 mm
Capacity	6/8 sample and 1 reference cell
Temperature Control PAC-743	Sample only Heating/cooling system utilizing Water cooled Peltier effect
Temperature Control PAC-743R	Sample & Reference Heating/cooling system utilizing Water cooled Peltier effect
Operating Temperature	0 to 100 degC (at 20 degC)
Temperature control accuracy	±0.1 degC (cell holder sensor)
Temperature Accuracy	With cell holder sensor ±0.5 degC (20 to 40 degC) ±1 degC (other temp. range)
Stirrer	Integrated variable speed magnetic stirrer - 2 mm path width micro cell cannot be used with the stirrer
Suggested Software	<ul style="list-style-type: none"> VWIS-958 - Temperature interval scan measurement program VWTP-959 - Temperature Gradient measurement and DNA melting analysis program

MCB-100

Mini Water Circulation Bath



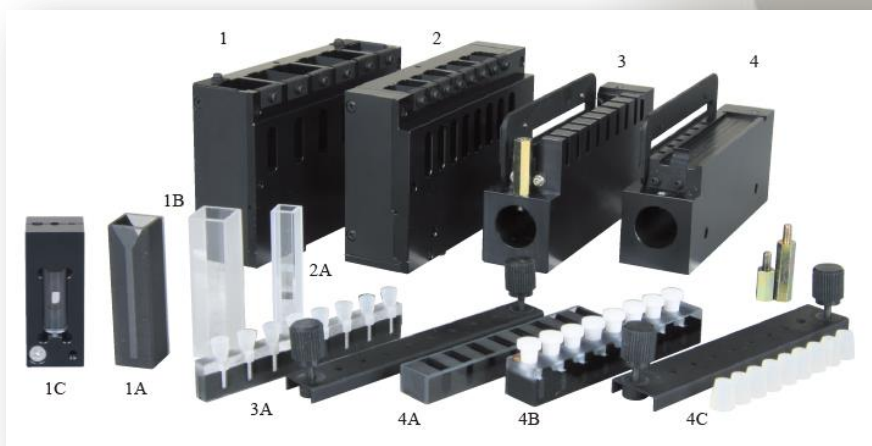
Specifications

Temperature control range	10 degC below ambient temperature to 40 degC (IN and OUT connected)
Bath capacity	Approx. 200 mL
Temperature sensor accuracy	±0.2 degC (at 20 degC)
Cooling/heating capacity	52W
Dimensions	160 (W) \x 278 (H) x 225 (D) mm
Suggested accessories	ETCS-761 – ETCR-762 – PAC-743

PAC-743 & PAC-743R

PAC-743 & PAC-743R allow measurements of the transmittance & absorbance of multiple samples by using dedicated cell blocks with temperature control.

The PAC-743R provides temperature control of the reference cell in addition to temperature control of the sample cells.



How to configure it

Cell block (Cell and temp. sensor are optional)	#	Compatible Cell	#	In-cell sensor (factory option)
6916-H243A - 6-position cell block (with variable speed magnetic stirrer) for rectangular cell, 10 x 10 mm	1	Rectangular quartz cell, 2 x 10 mm, max. 6pcs.	1A	6916-H516A Sensor in cell, 1 pc. 6916-H517A Sensor in cell, 6 pcs/set
		Rectangular quartz cell, 4 x 10 mm, max. 6pcs.		
		Rectangular quartz cell, 10 x 10 mm, max. 6pcs.	1B	
		6916-H360A - Capillary cell adaptor and Capillary cell, max. 6 pcs. (A sealing compound is required for using capillary cells.)	1C	
6916-H343A - 8-position cell block (with variable speed magnetic stirrer) for rectangular cell, 5 x 5 mm	2	Rectangular quartz cell, 5 x 5 mm, max 8 pcs.	2A	6916-H516A Sensor in cell, 1 pc. 6916-H518A Sensor in cell, 8 pcs/set
6916-H643A - 1 mm 8-position micro cell block (Including Silicon cap x 8, Silicon cap with sensor hole x1, and cap fixture) *Stirrer function is not available	3	1103-1171A - 8-position 1 mm micro cell 1 mm path length, 10 µL for each position	3A	6916-H516A Sensor in cell, 1 pc. *The 8th cell position is used only to monitor cell block temperature.
6916-H743A - 10 mm 8-position micro cell block *Stirrer function is not available	4	1103-0202A - 8-position 10 mm micro cell 10 mm path length, 100 µL for each position without capability for well caps	4A	N/A
		1103-1168 - 8-position 10 mm micro cell with Teflon caps 10 mm path length, 100 µL for each position	4B	6916-H516A Sensor in cell, 1 pc. *The 8th cell position is used only to monitor cell block temperature.
		6916-H543A - Silicon cap kit for 1103-1168, to prevent volatilization of samples at high temperatures consisting of silicon cap x8 , Silicon cap with sensor hole x1, and cap fixture	4C	

SAH-769 One drop accessory



Specifications

The SAH-769 One Drop accessory is a dedicated accessory for the V-700 Series to measure micro volume samples of protein and nucleic acid. The 1mm and 0.2 mm cells are included as standard with accessory.

Minimum Sample Volume

1mm pathlength 5 µL

0.2mm pathlength 0.6 µL

Precision of Quantitative Analysis

Solutions of Calf Thymus DNA (KH₂PO₄ / NaOH buffer at pH7) at several concentrations were measured by using cells with 1-mm. The spectrum has shown at Figure 1 and LDL has shown at Table 1.

Table 1 Sample Conc. and Abs [OP: 1mm]

Legend	Conc. [ng/µL]	Abs
—	0	0.0005
—	13	0.0228
—	26	0.0417
—	52	0.0838
—	260	0.4500
—	520	0.8970
—	780	1.3443
—	1040	1.8137

Table 1

Sample Concentration and Abs
[optical path: 1 mm]

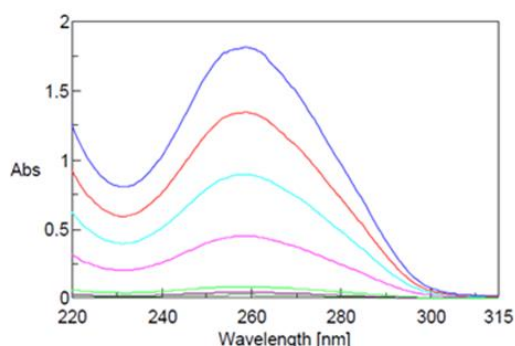


Figure 1

Absorbance spectra of DNA solution
[optical path: 1 mm]

Measurement Procedure



1) Drop sample on the cell



2) Close the cover glass and the lid of sample compartment



3) Start sample measurement



4) Cleaning the cell

less than
20 seconds

Measurement Parameters

Data interval: 0.5 nm

Measurement range: 220 to 315 nm

Band width: 1.5 nm

Response: Medium

Scan Speed: 200 nm/min

ASU-800 autosampler, combined with a syringe pump and a flow cell or a variety of sippers, automatically measures multiple liquid samples using spectrophotometer V-700 series. Tubes or tube racks according to the sample volume and the amount of samples, or dedicated racks for microplates can be purchased separately. PC control software is included as standard.

ASU-800 can be coupled with the following accessories:

- **NQF-781** - Vacuum sipper
- **NQF-783** - Vacuum sipper with long-path flow cell
- **NPF-721** - Peristaltic sipper
- **ASP-849** - Syringe pump
- **SFC-712** - Flow cell holder
- **MFC-714** - Micro flow cell holder
- **FIC-715** - Micro flow cell holder
- **AWU-828** Washing unit
- **Dust Cover**

ASU-800 - Autosampler unit



Rack	Tube/Microplate/Vials
6989-J111A – SRA-811 15 mm O.D. test tube rack - 100 samples	6774-H110A 15 mm O.D. test tube, 15 mm (O.D.) x 105 mm (H) - 10 mL - 100 pcs/set
6989-J112A – SRA-812 13 mm O.D. test tube rack – 100 samples	6774-H109A 13 mm O.D. test tube, 13 mm (O.D.) x 100 mm (H) - 7 mL - 100 pcs/set
6989-J113A – SRA-813 12 mm O.D. test tube rack – 150 samples	6905-H146A 12 mm O.D. test tube, 12 mm (O.D.) x 105 mm (H) - 5 mL - 100 pcs/set
6989-J114A – SRA-814 10 mm O.D. test tube rack – 150 samples	6774-H111A 10 mm O.D. test tube, 10 mm (O.D.) x 90 mm (H) - 3 mL - 100 pcs/set
6989-J116A - SRA-816 Microplate Rack – 192 samples	Commercially available 1ml 96-well microplates
6989-J117A - SRA-817 Thermostatted Microplate Rack – 192 samples	Commercially available 1ml 96-well microplates
6989-J118A – SRA-818 Vial Rack	0410-0102 Screw top vial – 1.5 mL - 500 pcs./set

Specifications

Nozzle	SUS-316 - 1.5 mm (O.D.) x 1.1 mm (I.D.)
Tubing	Teflon – 2.0 mm (O.D.) x 1.0 mm (I.D.)
Software	Fully controlled by Personal Computer - Included as standard: Spectra Measurement, Quantitative Calibration, Quantitative Analysis and Fixed Wavelength Measurement
Communication	USB



AWU-828 Washing Unit

Washing unit specifically design for the sippers NQF-781, NQF-783 and NPF-782.

The AWU-828 can automatically wash the ASU-800 autosampler system.



Dust cover

This is a dust case that covers the rack part of ASU-800

NQF-781 – Vacuum sipper



Specifications

NQF-781 can be used in conjunction with the autosampler ASU-800.
A 10 mm rectangular cell holder is integrated in addition to the 10 mm flow cell, and can be easily switched.

Optical Pathlength	10 mm
Cell Capacity	about 50 µL
Cell Material	Quartz
Carryover	Less than 1%
Minimum sample requirement	0.7 mL for low-viscosity samples
Material in contact with sample/solvent	Teflon, Fluoroelastomer, Aflon
Maximum Processing Capacity	450 samples/hour
Wavelength Range	220 - 900 nm (V-730/750/760) 220 - 2200 nm (V-770) 220 - 1600 nm (V-780)

NQF-783

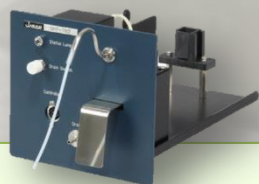
Vacuum sipper with long-path flow cell



Specifications

NQF-783 can be used in conjunction with the autosampler ASU-800.
A 50 mm rectangular cell holder is integrated in addition to the 50 mm flow cell, and can be easily switched.

Optical Pathlength	50 mm
Cell Capacity	about 1400 µL
Cell Material	Quartz
Carryover	Less than 1%
Minimum sample requirement	2.4 mL for low-viscosity samples
Material in contact with sample/solvent	Teflon, Fluoroelastomer, Aflon
Maximum Processing Capacity	450 samples/hour
Wavelength Range	220 - 900 nm (V-730/750/760) 220 - 2200 nm (V-770) 220 - 1600 nm (V-780)



NPF-782 – Peristaltic sipper

Specifications

NPF-782 can be used in conjunction with the autosampler ASU-800.
A 10 mm rectangular cell holder is integrated in addition to the 10 mm flow cell, and can be easily switched.
The sample can be recovered by reversing the 'drain' direction.

Optical Pathlength	10 mm
Cell Capacity	about 50 µL
Cell Material	Quartz
Carryover	Less than 1%
Minimum sample requirement	0.7 mL for low-viscosity samples
Material in contact with sample/solvent	Teflon, Fluoroelastomer, Aflon
Maximum Processing Capacity	360 samples/hour
Wavelength Range	220 - 900 nm (V-730/750/760) 220 - 2200 nm (V-770) 220 - 1600 nm (V-780)

ASP-849 – Syringe Pump



Specifications

The ASP-849 can be used in conjunction with the ASU-800 and SFC-712/MFC-714/FIC-715 flow cell holders. The syringe pump is suitable for drawing small quantities of sample.

Reproducibility of volume delivery	Within $\pm 1\%$
Syringe volume	2.5 mL (included as standard)
Optional syringes	1 mL – 5 mL – 10 mL
Material in contact with sample/solvent	Teflon, Fluoroelastomer, Quartz
Compatible Flow Cell Holders	SFC-712 MFC-714 FIC-715

SFC-712 – Flow cell holder



Specifications

Flow Cell compatibility	6156-H607A 5 mm path length flow cell (50 μ L cell capacity)
	6156-H608A 10 mm path length flow cell (100 μ L cell capacity)
Flow Cell	Rectangular Quartz
Material in contact with sample/solvent	Teflon, Fluoroelastomer, Quartz
Wavelength Range	220 - 900 nm (V-730/750/760)
	220 - 2200 nm (V-770)
	220 - 1600 nm (V-780)

MFC-714– Micro Flow cell holder FIC-715 – Micro Flow cell holder



Specifications

Cell Material	MFC-714: SUS FIC-715: Teflon
Optical Pathlength	10 mm
Cell Capacity	20 μ L

LFC-713 – Long path flow cell holder



Specifications

Flow Cell compatibility	6522-J343A 30 mm path length flow cell (approx. 0.6 mL cell capacity)
	6522-J333A 50 mm path length flow cell (approx. 1 mL cell capacity)
	6522-J243A 100 mm path length flow cell (approx. 2 mL cell capacity)
Flow Cell	Synthetic Fused Silica
Wavelength Range	220 - 900 nm (V-730/750/760)
	220 - 2200 nm (V-770)
	220 - 1600 nm (V-780)



FLH-740 – Film holder

Specifications

FLH-740 accessory are used to measure the transmittance of solid, transparent samples such as films, plate glass, and filters.

Minimum Sample size 15 mm (H) x 15 mm (W)

Maximum Sample size 80 mm (H) x 100 mm (W)

Sample Thickness 0.5 to 10 mm

Insert Mode Leaf Spring type



FLH-741 – Film holder

Specifications

FLH-741 accessory are used to measure the transmittance of solid, transparent samples such as films, plate glass, and filters.

Minimum Sample size 5 mm (H) x 5 mm (W)

Maximum Sample size 80 mm (H) x 100 mm (W)

Sample Thickness 0.5 to 25 mm

Insert Mode Holding Plate type



RSH-744 – Rotary sample holder

Specifications

RSH-744 accessory can be used to measure a film type sample and rotating the sample manually. The sample can be rotated 360° around the optical axis and the inclination (tilt) of the sample versus the source beam can be varied within a range of $\pm 50^\circ$.

Minimum Sample size 10 mm (H) x 30 mm (W)

Maximum Sample size 18 mm (H) x 38 mm (W)

Sample Thickness 1 to 2 mm

Rotation Angle Optical axis: 360°
Perpendicular to the optical axis: $\pm 50^\circ$



VTA-752 – Film holder (variable incident angle)

Specifications

VTA-752 is a film holder to measure transmittance of a film type sample, changing the incident angle of the light beam. The incident angle of the source light beam can be set in 1° increments.

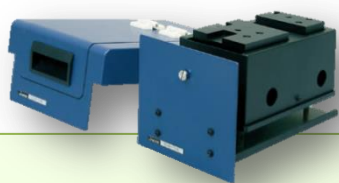
Minimum Sample size 15 mm (H) x 35 mm (W)

Maximum Sample size 80 mm (H) x 70 mm (W)

Sample Thickness 1 to 2 mm

Rotation Angle $\pm 90^\circ$

SLM-907 – Specular Reflectance accessory



Specifications

SLM-907 accessory is designed to measure the relative reflectance of a sample using the reflected light from an aluminum-deposited plane mirror as a reference. This accessory allows measurement of the reflectance of metal-deposited films and/or metal Plating, as well as measurement of film thickness using a film thickness analysis program.

Incident angle	Approx. 5°
Minimum Sample size	10 x 10 mm
Maximum Sample size	100 x 120 mm
Beam Port	7 mm diam. (1 mm, 2 mm diam. Options)
Reflection Reference	Aluminum-deposited plane mirror (Standard)
Wavelength range	250 - 1000 nm
Sample chamber lid	Included as standard

Options

	MSK-001	MSK-002
Sample stage with mask	2 mm diam.	4 mm diam.
Minimum Sample Size	3 x 3 mm	5 x 5 mm
Maximum Sample Size	50 x 50 mm	50 x 50 mm

VWRR-769

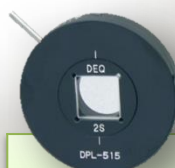
Reflectance correction program

VWRR-769 program can convert a relative reflectance spectrum, obtained by using a specular reflectance accessory, to an absolute reflectance spectrum by multiplying the absolute reflectance spectrum of the reflectance standard with a relative reflectance spectrum of the sample.

VWRR-769 software includes typical absolute reflectance data of an evaporated aluminum mirror for conversion.

Required Accessories

SLM-907



DPL-515 – Depolarization Plate

Specifications

DPL-515 depolarizer converts incident light to non-polarized light. Non-polarized light is obtained when the rotation angle is set to 45°. The applicable spectral range is from 350 to 2,500 nm.



GPH-506 – Polarizer

Specifications

GPH-506 polarizer converts the source light from the instrument monochromator into linearly polarized light. The plane of polarization can be set at 0° (vertical linearly polarized light) and 90° (horizontal linearly polarized light). The applicable spectral range is from 215 to 2,300 nm.

Biochemical Softwares

VWKN-772

Kinetics analysis program

VWKN-772 Kinetics Analysis program performs time course measurements of multiple samples, plots the graphs and calculates the maximum reaction velocity (V_{max}), Michaelis Menten constant (K_m) and the Hill constant (n).

The program also supports calculation of inhibitor constant and determination of inhibitor type by comparing data obtained with and without an inhibitor. An automated cell changer can be utilized, enabling batch analysis of multiple data.

Five types of plots

- Michaelis-Menten
- Lineweaver-Burk
- Hofstee
- Eadie
- Hill

Calculation items

- Maximum reaction velocity (V_{max})
- Michaelis-Menten constant (K_m)
- Hill constant (n)
- determination of inhibitor type
- inhibitor constant

VWPN-952

Protein nucleic acid quantitation program

VWPN-952 program measures the absorbance of protein and nucleic acid solutions at specified wavelengths and calculates the concentration of the protein and nucleic acids based on a calculation method selected from five different types listed below. It is possible to select the wavelength for baseline correction and to choose whether baseline correction is to be performed. Generally, correction is performed for turbid solutions at a wavelength of 320 nm. Dilution rate correction is also possible for the user-defined concentration calculation method.

Available calculation methods

- Absorbance ratio of 280/260 nm
- Absorbance ratio of 230/260 nm
- Warburg-Christian method
- User-defined absorbance ratio
- User-defined concentration calculation

VWTP-959

Temperature Gradient measurement and DNA melting analysis program

VWTP-959 temperature programming software offers DNA or protein melting analysis.

Controlling the temperature of a Peltier accessory (single or multi-cell), the VWTP-959 provides measurement of the absorbance at a specific wavelength during temperature changes, then calculates the melting temperature (T_m) from the results of the measurement.

Suggested Accessories

EHCS -760 - ETCS-761 – ETCR-762
PSC-763 - PAC-743

VWIS-957

Interval scan measurement program

VWIS-957 program measures spectra of samples automatically with a user-defined time interval between scans. The final data array can be displayed as a 2-D spectral display; a 3-D spectral display; contour, color-image or cross-section images; or 2-D displays of the peak height/ratio, peak area/ratio, FWHM or peak shift calculations. Data plots similar to the VWIS-957 software can be obtained using the VWTS-958 data array.

VWIS-957 can be used with an automated cell changer accessory for spectral data collection of multiple samples.

Suggested Accessories

NCP-705

VWIS-958

Temperature interval scan measurement program

VWTS-958 program measures spectra of samples automatically with a user-defined temperature interval between scans, providing a data array similar to the VWIS-957 program, but related to sample temperature. VWTS-958 can be used with an automated cell changer and/or with Thermostatted Single or Multiple holders for spectral data collection of multiple samples.

Suggested Accessories

NCP-705
EHCS -760 - ETCS-761 – ETCR-762
PSC-763 - PAC-743

Materials Analysis Softwares

VWQM-978

Spectrum quantitative measurement program

VWSQ-978 package provides the quantitative analysis for a maximum of ten peaks by applying the Beer-Lambert law to each selected sample peak. Simultaneous determination of multiple components of a sample is possible if the absorption peaks of each component do not overlap. Two calculation methods are available, using either the peak height or peak area of the selected absorption peaks.




Spectra Manager CFR

Biochemical Package

VWKN-772

Kinetics analysis program

VWKN-772 Kinetics Analysis program performs time course measurements of multiple samples, plots the graphs and calculates the maximum reaction velocity (V_{max}), Michaelis Menten constant (K_m) and the Hill constant (n).

The program also supports calculation of inhibitor constant and determination of inhibitor type by comparing data obtained with and without an inhibitor. An automated cell changer can be utilized, enabling batch analysis of multiple data.

Five types of plots

- Michaelis-Menten
- Lineweaver-Burk
- Hofstee
- Eadie
- Hill

Calculation items

- Maximum reaction velocity (V_{max})
- Michaelis-Menten constant (K_m)
- Hill constant (n)
- determination of inhibitor type
- inhibitor constant

VWTP-959

Temperature Gradient measurement and DNA melting analysis program

VWTP-959 temperature programming software offers DNA or protein melting analysis.

Controlling the temperature of a Peltier accessory (single or multi-cell), the VWTP-959 provides measurement of the absorbance at a specific wavelength during temperature changes, then calculates the melting temperature (T_m) from the results of the measurement.

Suggested Accessories

EHCS -760 - ETCS-761 – ETCR-762
PSC-763 - PAC-743

VWPN-952

Protein nucleic acid quantitation program

VWPN-952 program measures the absorbance of protein and nucleic acid solutions at specified wavelengths and calculates the concentration of the protein and nucleic acids based on a calculation method selected from five different types listed below. It is possible to select the wavelength for baseline correction and to choose whether baseline correction is to be performed. Generally, correction is performed for turbid solutions at a wavelength of 320 nm. Dilution rate correction is also possible for the user-defined concentration calculation method.

Available calculation methods

- Absorbance ratio of 280/260 nm
- Absorbance ratio of 230/260 nm
- Warburg-Christian method
- User-defined absorbance ratio
- User-defined concentration calculation

CFR compliant

YES

UCB-710 – Bio rectangular cell holder



Specifications

Cell holder for V-730-CFR BIO package.

A cell height adjustment function provides the ability to use a 100 μ L micro cell. A mask for a 100 μ L micro cell is standard, 50 μ L can be supplied as option.

Sample Cell

Rectangular cell
pathlength 10 mm

Reference Cell

Rectangular cell
pathlength 10 mm

Capacity

1 sample and 1 reference cell

Temperature

Ambient

Minimum Cell Volume

50 μ L

6916-J310A – Bio-Package for V-700-CFR series

Part Number	Model	Description
6916-H110A		Bio cell holder block (sample side cell block of UCB-710) including Mask for 100uL micro cell
4880-7472A	VWKN-772	Advanced kinetics analysis program
4880-6522A	VWTP-959	Temperature gradient measurement and DNA melting analysis program
4880-6515A	VWPN-952	Protein nucleic acid quantitation program



JASCO Europe S.r.l.

Via Cadorna, 1 - 23894 Cremella (LC)

jasco@jasco-europe.com

www.jasco-europe.com

Follow us on:



DISCLAIMER

The contents of this publication are for reference and illustrative purposes only. Information, descriptions, and specifications in this document are subject to change without notice and cannot be used from third parts for data comparison and/or performance comparison. JASCO assumes no responsibility and will not be liable for any errors or omissions contained herein or for incidental, consequential damages or losses in connection with the furnishing, performance or use of this material.