

Extraction of Cocaine and Metabolites from Oral Fluid Using ISOLUTE® SLE+ Prior to GC-MS Analysis

This application note describes the extraction of cocaine and a range of cocaine metabolites from spiked oral fluid collected with the Quantisal Oral Collection device prior to GC-MS.

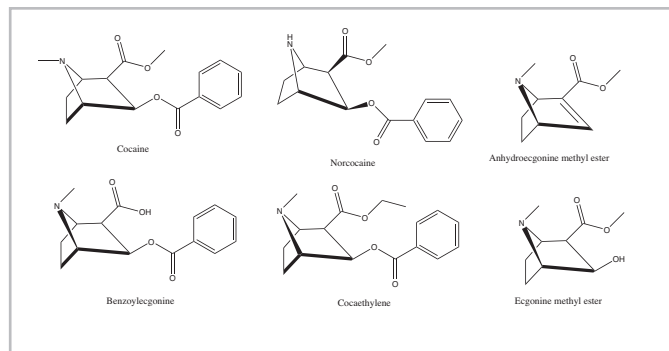


Figure 1. Cocaine structures

Introduction

ISOLUTE® SLE+ Supported Liquid Extraction plates and columns offer an efficient alternative to traditional liquid-liquid extraction (LLE) for bioanalytical sample preparation, providing high analyte recoveries, no emulsion formation, and significantly reduced sample preparation.

This application note describes effective and efficient ISOLUTE SLE+ protocols optimized for loading volumes of either 400 µL or 1 mL. The simple sample preparation procedure delivers clean extracts and analyte recoveries greater than 85% with RSDs of <10% for all analytes.

Analytes

Cocaine, AEME, EME, Benzoylecgonine, Cocaethylene and Norcocaine

Sample Preparation Procedure

Sample Pre-treatment The oral fluid collection device was used to collect samples. One tube collects 1 mL of oral fluid +/- 10% in approximately 3 mL of buffer.

Spike BZE-d₃ internal standard and vortex mix thoroughly. Add 15 µL concentrated ammonium hydroxide (28–30% stock (aq)) to the contents of the tube.

ISOLUTE SLE+ 400 µL Sample Volume Columns, Part Number 820-0055-B

Sample Loading: Load the oral fluid/buffer mix (400 µL total volume) onto the column and apply a pulse of vacuum or positive pressure to initiate flow. Allow the sample to adsorb for 5 minutes.

Analyte Extraction: Apply dichloromethane/isopropanol (95:5, v/v, 1 mL) and allow to flow under gravity for 5 minutes. Apply a further aliquot of dichloromethane/isopropanol (95:5, v/v, 1 mL) and allow to flow for another 5 minutes. Apply vacuum or positive pressure to pull through any remaining extraction solvent.

ISOLUTE SLE+ 1 mL Sample Volume Columns, Part Number 820-0140-C

Sample Loading: Load the oral fluid/buffer mix (1 mL total volume) onto the column and apply a pulse of vacuum or positive pressure to initiate flow. Allow the sample to adsorb for 5 minutes.

Analyte Extraction: Apply dichloromethane/isopropanol (95:5, v/v, 2.5 mL) and allow to flow under gravity for 5 minutes. Apply a further aliquot of dichloromethane/isopropanol (95:5, v/v, 2.5 mL) and allow to flow for another 5 minutes. Apply vacuum or positive pressure to pull through any remaining extraction solvent.

Post Elution and Reconstitution: Dry the extract in a stream of air or nitrogen using a Biotage® SPE Dry Sample Concentrator System (40 °C, 20 to 40 L/min) or TurboVap (1.5 bar at 40 °C for 1 hr). Upon dryness, add 50 µL ethyl acetate and 50 µL BSTFA:TMCS 99:1. Vortex for 20 seconds and transfer to a high recovery glass vial and cap with a non-split cap. Heat vial in a heating block set to 70 °C, for 20 minutes. Remove vial from the block and allow to cool.

GC Conditions

Instrument:	Agilent 7890A
Column:	SGE capillary column; BPX5, 30 m x 0.25 mm ID x 0.25 µm
Carrier:	Helium 1.2 mL/min (constant flow)
Inlet:	250 °C, Split (ratio 20:1), 24 mL/min, septum purge flow: 3 mL/min
Injection:	1 µL
	Wash solvents: ethyl acetate and dichloromethane/isopropanol (95:5, v/v)
Oven:	Initial temperature 100 °C
	Ramp 4 °C/min to 190 °C
	Ramp 100 °C/min to 250 °C
	Hold temperature for 4 min
Transfer Line:	280 °C

MS Conditions

Instrument:	Agilent 5975C
Source:	230 °C
Quadrupole:	150 °C
MSD mode	SIM

SIM Parameters

Table 1. Ions acquired in the Selected Ion Monitoring (SIM) mode

SIM Group	Analyte	Target (Quant) Ion	1 st Qual Ion	2 nd Qual Ion	3 rd Qual Ion
1	AEME	152	153	166	122
2	EME	96	97	82	83
3	Cocaine	94	82	83	105
4	Benzoylecgonine-d ₃ TMS	243	364	N/A	N/A
4	Benzoylecgonine TMS	240	361	256	N/A
4	Cocaethylene	196	317	272	N/A
5	Norcocaine TMS	140	240	105	N/A

Results

This ISOLUTE® SLE+ protocol demonstrates analyte recoveries ranging from 85–99% as shown in **Figure 2**. RSDs were below 10% for all analytes.

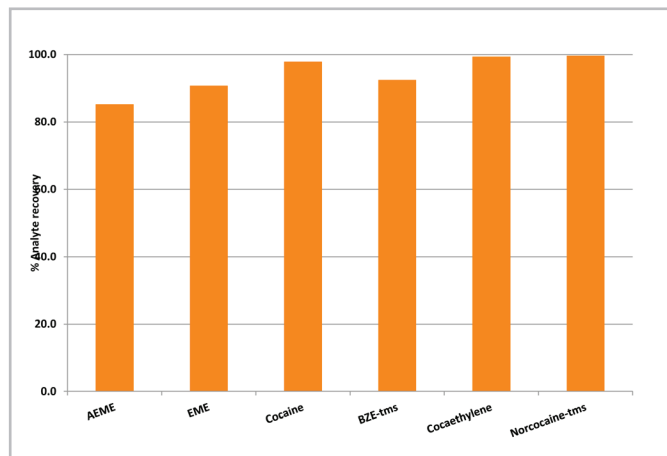


Figure 2. Typical analyte % recoveries for extracted cocaine and metabolites from urine (n=7) using the ISOLUTE® SLE+ protocol

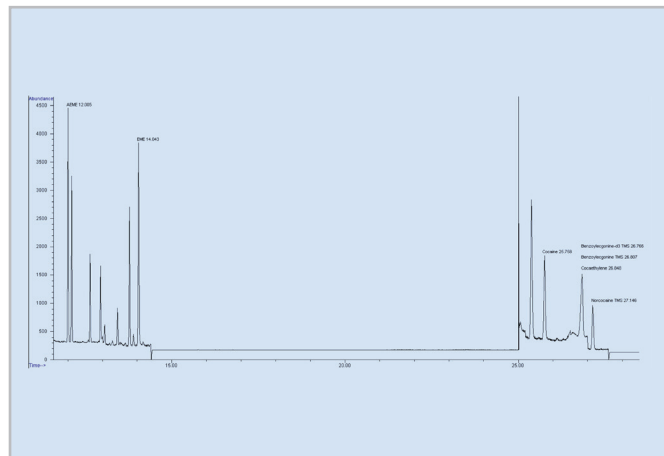


Figure 3. GC-MS chromatography for cocaine and metabolites from oral fluid at 300 ng/mL

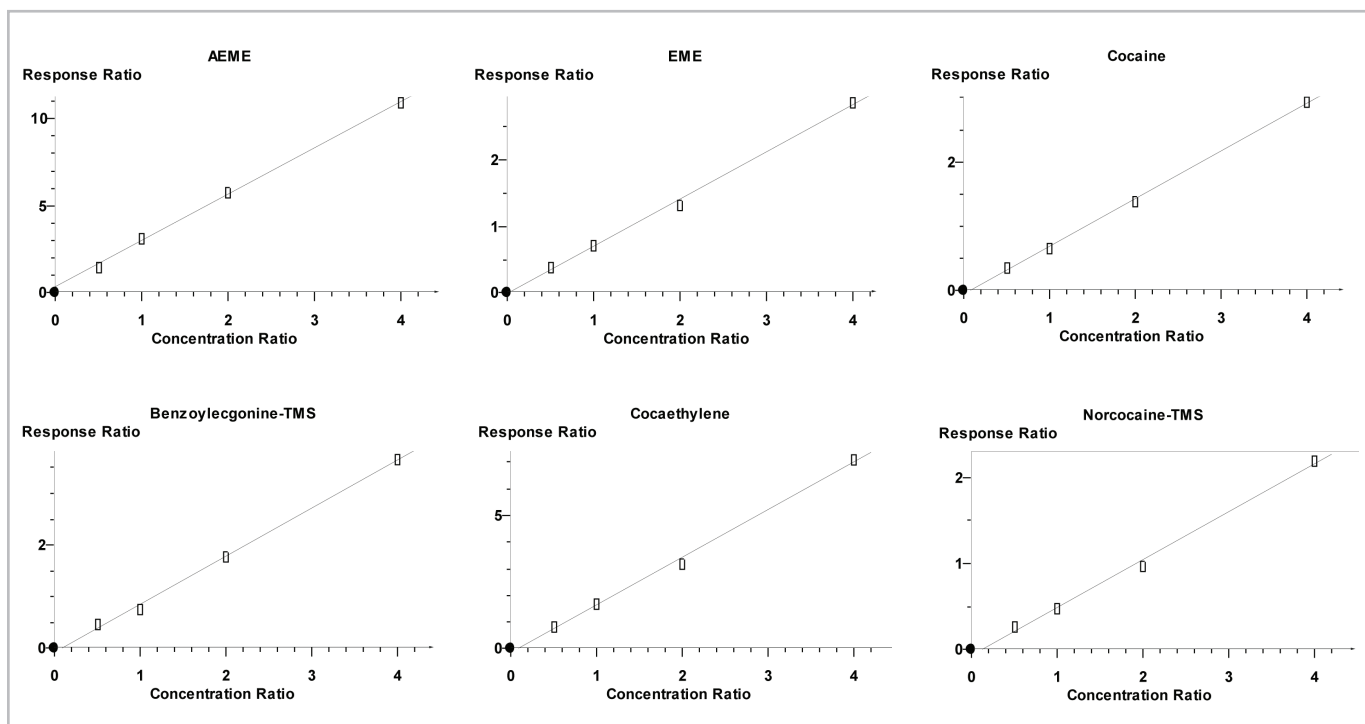


Figure 4. Calibration curves for the application analytes showing r^2 values ranging from 0.9957 to 0.9990

Table 2. Limits of Quantitation using the ISOLUTE® SLE+ 400 µL sample volume column

Analyte	Minimum Extracted LOQ
AEME	37.5 ng/mL
EME	37.5 ng/mL
Cocaine	37.5 ng/mL
Benzoylecgonine	37.5 ng/mL
Cocaethylene	37.5 ng/mL
Norcocaine	37.5 ng/mL

Table 3. Estimated Limits of Quantitation using the ISOLUTE® SLE+ 1 mL sample volume column

Analyte	Minimum Extracted LOQ
AEME	15 ng/mL
EME	15 ng/mL
Cocaine	15 ng/mL
Benzoylecgonine	15 ng/mL
Cocaethylene	15 ng/mL
Norcocaine	15 ng/mL

Ordering Information

Part Number	Description	Quantity
820-0055-B	ISOLUTE® SLE+ 400 µL Supported Liquid Extraction Column	50
820-0140-C	ISOLUTE® SLE+ 1 mL Supported Liquid Extraction Column	30
121-9600	Biotage® VacMaster™-96 Sample Processing Manifold	1
PPM-48	Biotage® PRESSURE+ 48 Positive Pressure Manifold 48 Position	1
SD-9600-DHS-EU	Biotage® SPE Dry Sample Concentrator System 220/240 V	1
SD-9600-DHS-NA	Biotage® SPE Dry Sample Concentrator System 100/120 V	1
C103263	TurboVap® 96 100/120 VAC	1
C103264	TurboVap® 96 1220/240 VAC	1

For the latest application notes visit www.biotage.com

EUROPE

Main Office: +46 18 565900
Toll Free: +800 18 565710
Fax: +46 18 591922
Order Tel: +46 18 565710
Order Fax: +46 18 565705
order@biotage.com

NORTH & LATIN AMERICA

Main Office: +1 704 654 4900
Toll Free: +1 800 446 4752
Fax: +1 704 654 4917
Order Tel: +1 704 654 4900
Order Fax: +1 434 296 8217
ordermailbox@biotage.com

JAPAN

Tel: +81 3 5627 3123
Fax: +81 3 5627 3121
jp_order@biotage.com

CHINA

Tel: +86 21 2898 6655
Fax: +86 21 2898 6153
cn_order@biotage.com

To locate a distributor,
please visit our website at
www.biotage.com